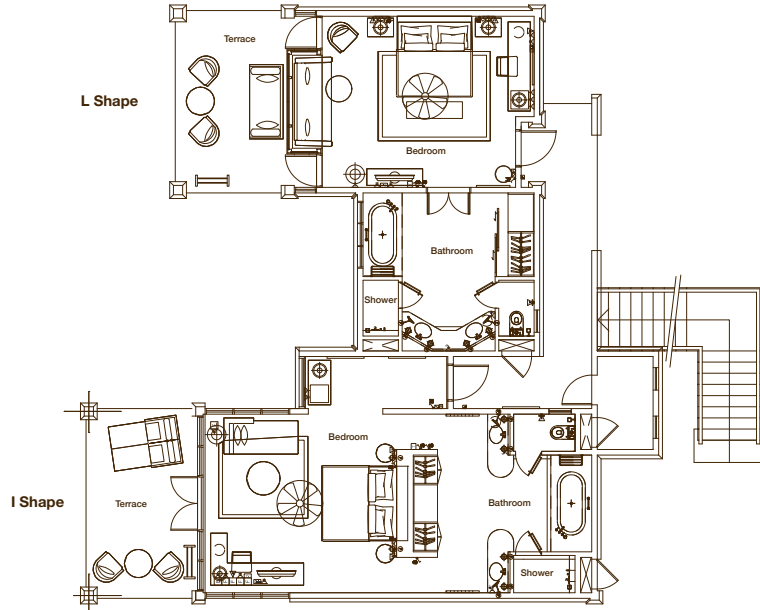


64 JUNIOR SUITES

(70 m²)

In buildings with thatched roofs of a maximum of 8 suites. There are 51 suites on the ground and first floor (with sea view or overlooking the tropical garden and 8 of these suites have direct access to the beach) + 5 suites on stilts overlooking the natural fish reserve. They comprise of one bedroom with a sitting area. Interleaving Junior suites are available.



12 FAMILY SUITES

(86 m²)

In buildings with thatched roofs, the new Family suites comprise of one main en-suite bedroom, a sitting area + a children's room with bunk beds and a bathroom. These suites are either on the ground floor or first floor with sea view or overlooking the tropical garden.

