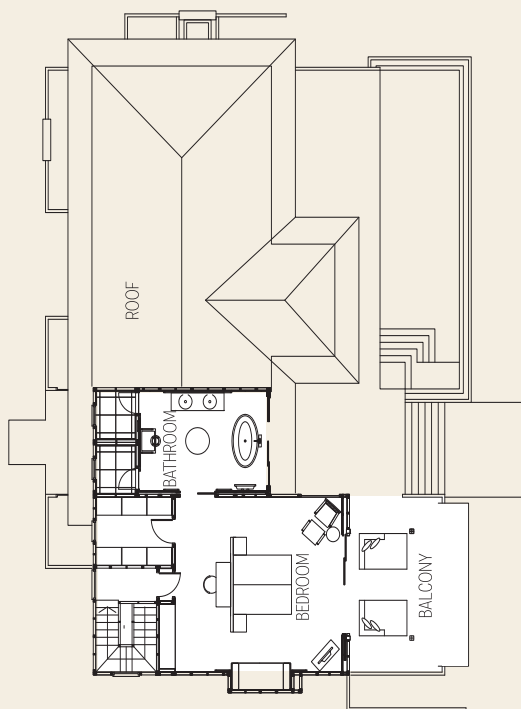


AYADA ROYAL OCEAN SUITE

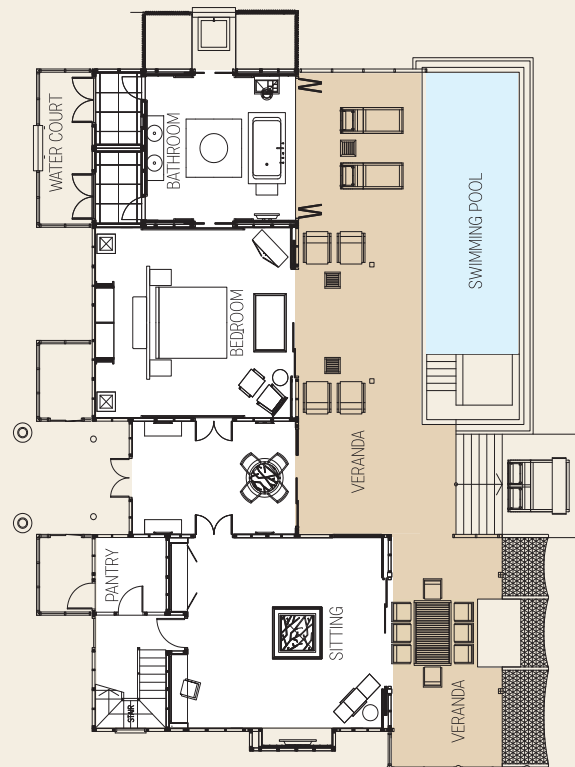
With its distinct prime location at the very tip of the jetty, this split-level presidential suite is considered an island palace and offers two spacious bedrooms; one on the ground and the other on the upper floor, each with private bathrooms. The Royal Ocean Suite comprises a large entrance hall with dining facility, a lavish living area with glass floor viewing panel, separate pantry area, walk in closet, and an upper floor balcony area providing 180 degrees views of the endless horizon. In addition, this suite boasts the largest private outdoor terrace area overlooking the ocean; complete with an outdoor shower area, ocean hammocks, a swing seat, sun loungers, a large swimming pool with Jacuzzi and direct access to the lagoon.



First Floor



Ground Floor



Total Area : 318 sqm

Max. occupancy : 4 Adults + 1 Infant (Baby cot) or 4 Adults + 4 Children (Below 12 Years)